



# 3 Reasons for Saying “NO” to 42-inch Gas Pipelines in Monroe

## 1 - Threatens Our Water Supply

- Threatens the quality of Monroe County’s public and private drinking water, as well as water for our farms and livestock.
- Chemical, fuel and oil spills during construction and maintenance will pass unfiltered through karst limestone into caves, underground streams and drinking water.

## 2 - Endangers Our Families and Community

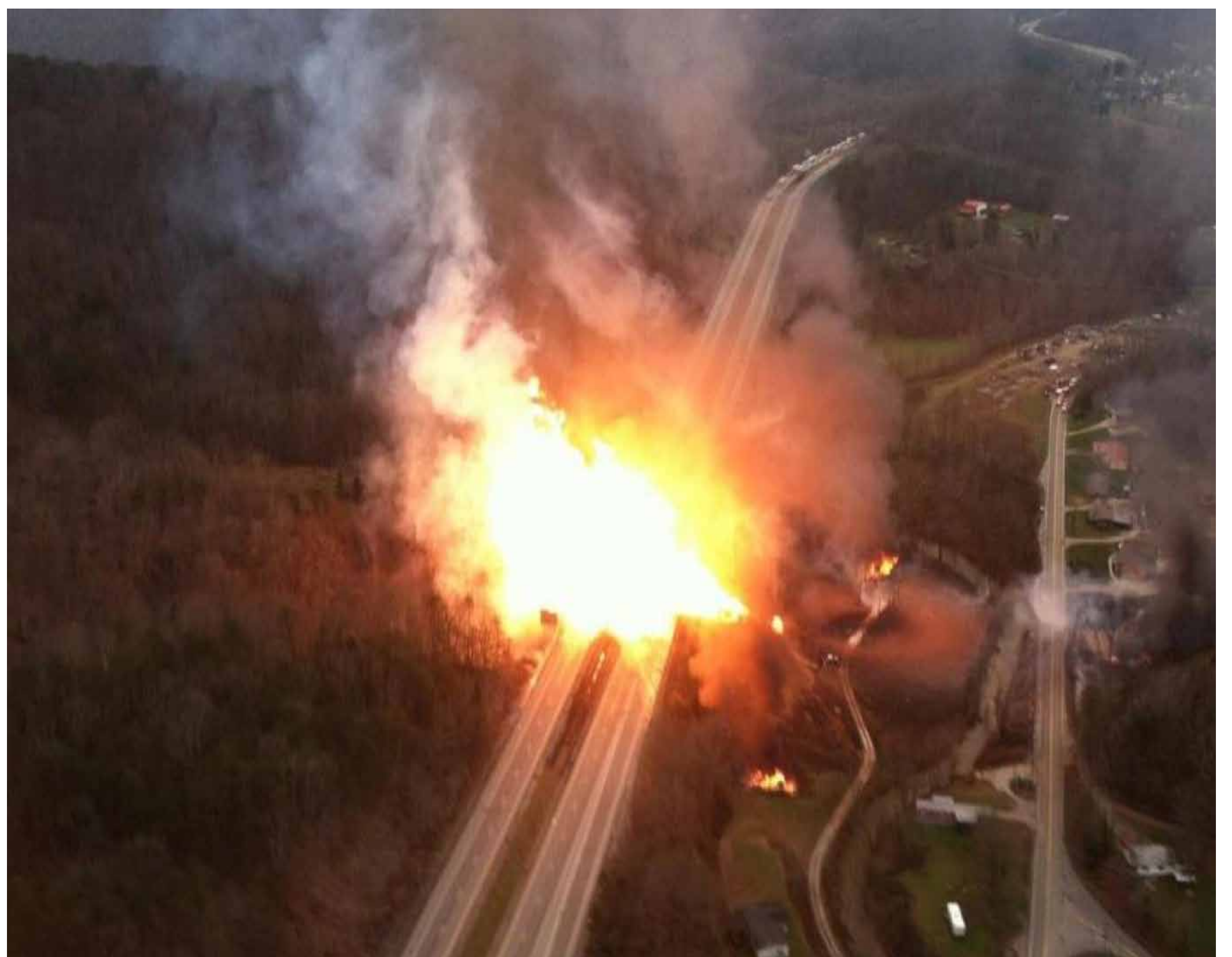
- Exposes our community to pipeline leaks and explosions.
- Increases likelihood of fatal pipeline-related truck accidents.
- Monroe County emergency responders are already strapped to provide fire and medical emergency services. Pipeline related explosions and accidents will increase their burden.

## 3 - Reduces Property Values and Restricts Landowner Rights

- Reduces both the market price and the ability to sell all properties affected by the pipeline, including neighboring properties.
- Restricts landowner use and control of additional construction on the right-of-way.
- Will not reduce any real estate taxes on the landowner’s property.



Pipeline construction crossing a stream in Wetzel County, WV. Photo by Ed Wade, Jr.



The MVP pipeline would be 4 times larger than the line that exploded in Sissonville WV in 2012. Fire from that explosion destroyed houses and melted part of nearby I-77.

## Finally: What is the Public Need?

To invoke eminent domain and force landowners to sell their rights-of-way, there must be a demonstrated public need. These are gas transmission lines – traveling through the county, but not intended to provide gas to anyone here. In fact, a strong case has been made that the U.S. markets the companies claim these lines would serve do not have a significant un-met need for decades into the future, especially when other smaller proposed projects are taken into account.

Much of this gas will likely head overseas to Europe and Asia and benefit corporate profits.

**West Virginia counties should be protected from corporate gas greed.**