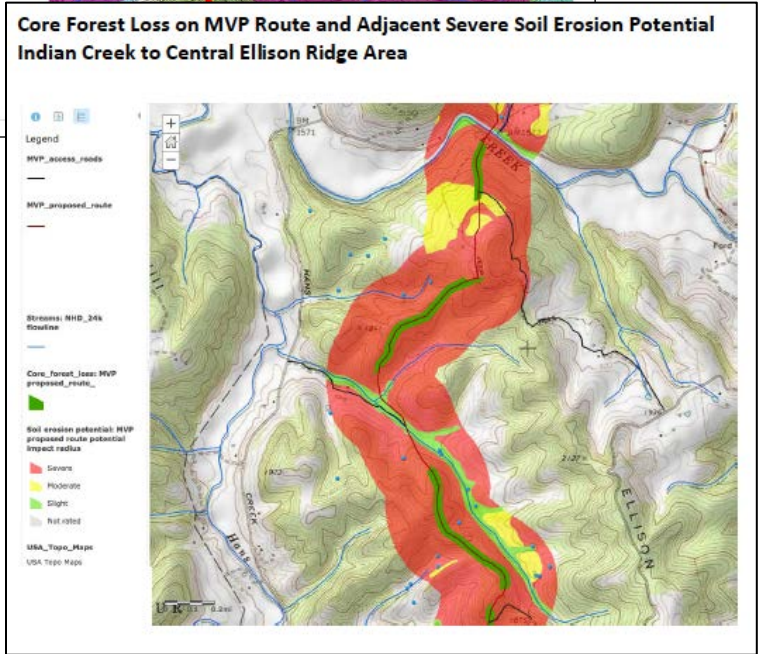
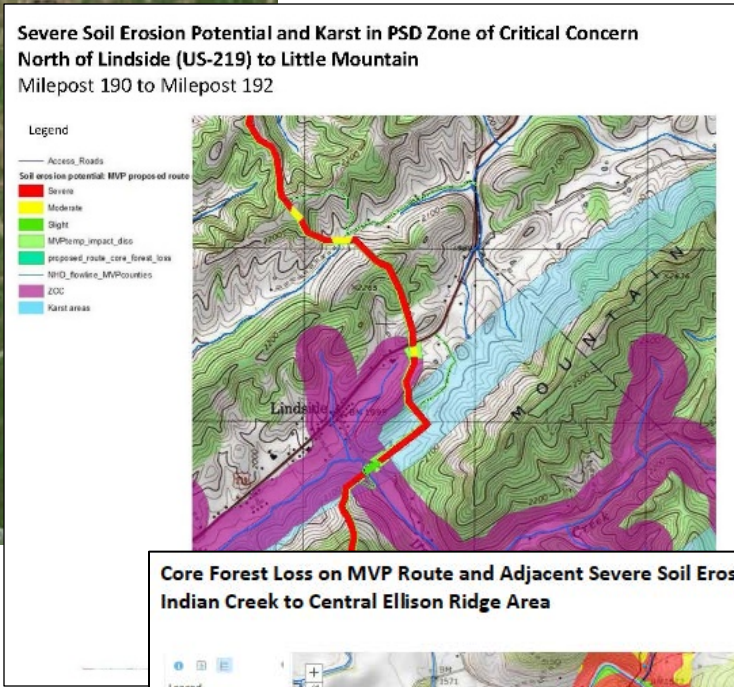
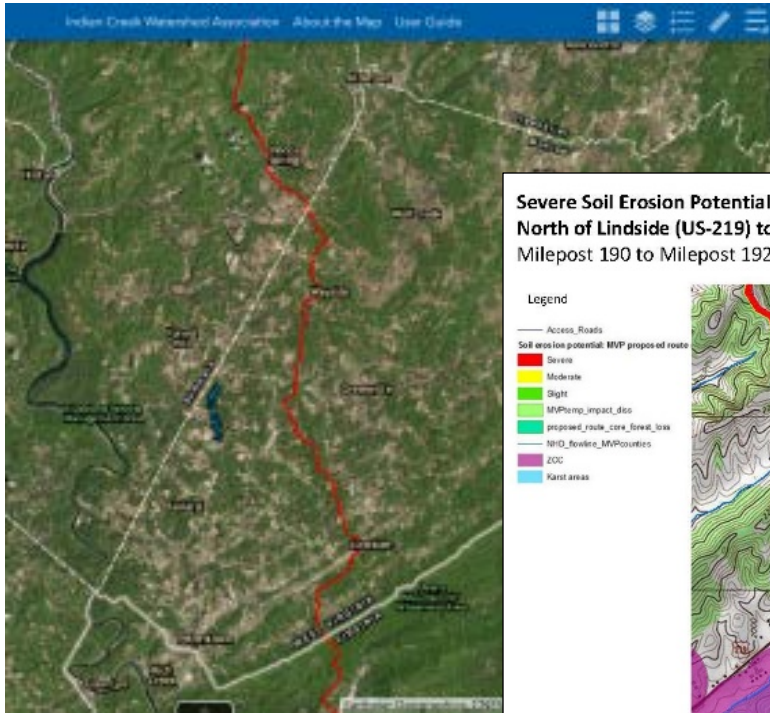


ICWA Interactive Environmental Map

Harnessing technology to assess and share water-related risks

ICWA's online environmental map was launched in June 2016 to help identify and assess risks to Monroe County's watersheds. A collaborative effort with Summers County, the project was supported by individuals and groups in both counties. Technical development and hosting is by Downstream Strategies of Alderson, WV.



- The map is a free interactive tool available to the public on the ICWA website [here](#).
- The map is valuable as a long-term resource to help residents and officials assess vulnerabilities across the county for water protection and development planning.
- The map currently depicts the proposed MVP route through West Virginia, with a focus on Summers and Monroe Counties. The zoom/out feature allows for big-picture and close-up analysis.
- Map layers can be turned on or off to view different features such as core forest, karst areas, soil erosion potential, depth to bedrock, etc.—which can show multiple compound effects.
- Significant risks come from access road development, work spaces, hydrostatic testing and water withdrawals, much of which takes place outside the 125-ft pipeline construction corridor.
- In a comment to the FERC, ICWA emphasized the inter-related and cumulative effects of MVP construction. A set of 22 maps (examples shown here) highlighted issues such as core forest loss, severe soil erosion potential and groundwater risk along the 20-mile corridor through Monroe County. (Access this and other ICWA comments [here](#).)